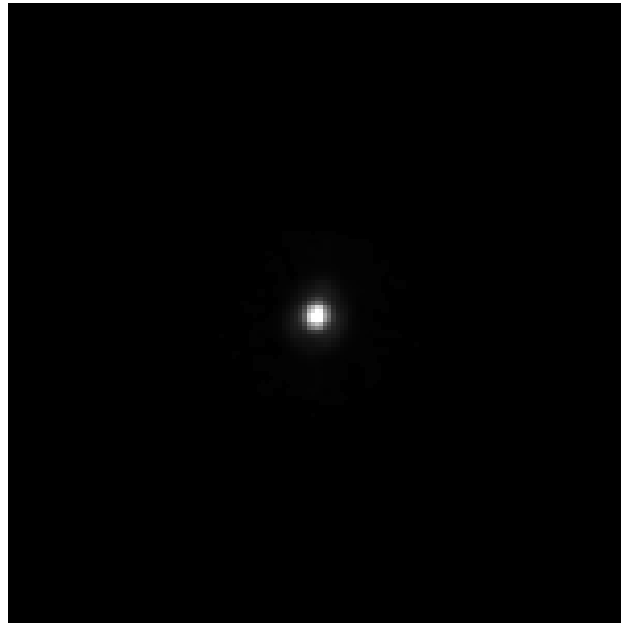


Dwarf Planet Candidate 2002 MS4



Picture (2020MS4):

Author: Renerpho

[https://en.wikipedia.org/wiki/\(307261\)_2002_MS4#/media/File:2002MS4_Hubble.png](https://en.wikipedia.org/wiki/(307261)_2002_MS4#/media/File:2002MS4_Hubble.png)

2002 MS4 is the largest known unnamed object in our solar system. It is a transneptunian object in the Kuiper belt, orbital classified as a Cubewano or extended scattered disk object (DO). Other classifications group it as an extended SDO (ESDO or DO) or as a cubewano. Otherwise, very little is known about it.

Important data of 2002 MS4:

Semi-major axis:	42.01 AU (about 6,300 mil. km)
Eccentricity:	0.14
Perihel – Aphel:	36.17 AU – 47.85 AU
Ecliptic inclination:	17.7°
Sidereal orbit period:	272 a 3.7 M
Average orbital speed:	4.56 km/s
Mean diameter:	808 km

Link: [https://en.wikipedia.org/wiki/\(307261\)_2002_MS4](https://en.wikipedia.org/wiki/(307261)_2002_MS4)